

Hamerton Road, Gravesend, DA11 9DX

Per month £1,050 Per month

AVAILABLE NOW !

As soon as you step into the property you are presented by the open spacious lounge/diner with its oak flooring and expansive living space. The fitted kitchen with complimentary lighting, is the real hub of the home.

Two double bedrooms to the first floor with decent storage areas in both rooms. With a great size bathroom. Make this an opportunity not to be missed, to add to this there's plenty of space for storage in the sizable area to the side of the house, leading to a well-planned rear garden with artificial grass and decking to ensure relaxation is one of the many options afforded to you renting this real gem of a property.

DON'T DELAY - VIEW TODAY !!!!

Hamerton Road, Gravesend, DA11 9DX

Lounge/Diner 22'5 x 11'1 (6.83m x 3.38m)



Bedroom 2 9'11 x 8'5 plus 3'2 x 2'9 (3.02m x 2.57m plus 0.97m x 0.84m)



Kitchen 9'1 x 5'10 (2.77m x 1.78m)



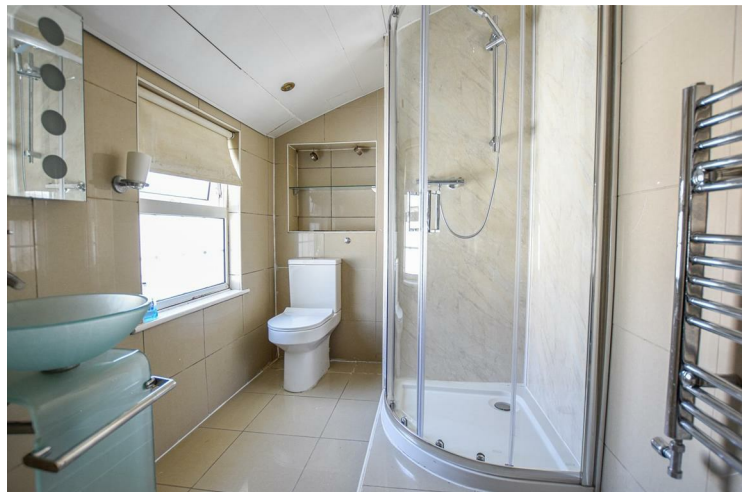
Bedroom 1 12'0 x 7 max (3.66m x 2.13m max)



Lean to 13'11 x 4'2 plus 7'9 x 4'0 (4.24m x 1.27m plus 2.36m x 1.22m)



Bathroom 8'6 x 5'9 (2.59m x 1.75m)

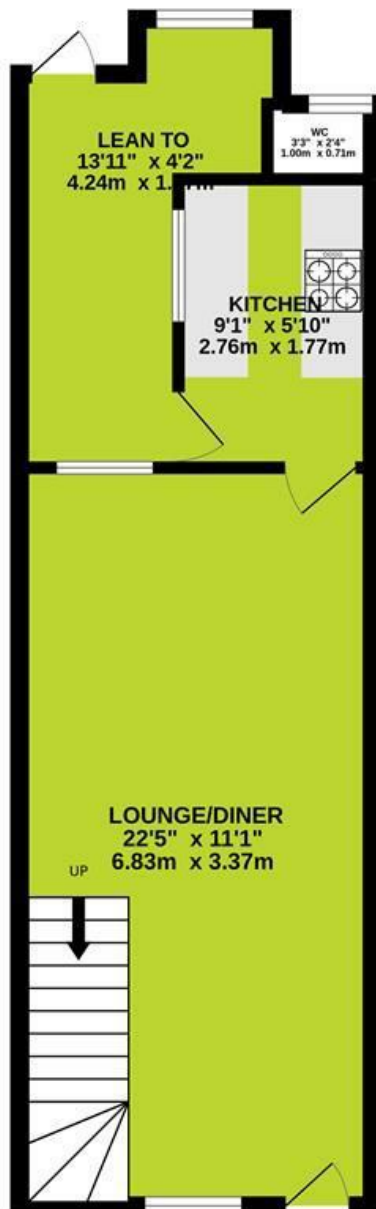


Garden 30' (9.14m)

Hamerton Road, Gravesend, DA11 9DX



GROUND FLOOR



1ST FLOOR



Whilst every attempt has been made to ensure the accuracy of the floorplan contained here, measurements of doors, windows, rooms and any other items are approximate and no responsibility is taken for any error, omission or mis-statement. This plan is for illustrative purposes only and should be used as such by any prospective purchaser. The services, systems and appliances shown have not been tested and no guarantee as to their operability or efficiency can be given.

Made with Metropix ©2022